

<b>CE:</b> (Europe) 220-240V - 50/60Hz	SKU: <b>01023983</b>	EAN: 737859239830
<b>UK:</b> (United Kingdom) 220-240V - 50/60Hz	SKU: <b>01023983</b>	EAN: 737859239830
<b>US:</b> (United States and Canada) 110-120V - 50/60Hz	SKU: <b>01023984</b>	EAN: 737859239847
<b>JP:</b> (Japan) 110-120V - 50/60Hz	SKU:	EAN:
<b>CCC:</b> (China) 220-240V - 50/60Hz	SKU: <b>01024246</b>	EAN: 737859242465



### GENERAL



LED



IP20

Product name:	<b>Nightbloom hang.lamp 60cm (white)</b>
Collection:	Nightbloom
Mounting:	Hanging lamp
Finish:	White
IP:	20
Use:	Indoor
Environment:	Marcel Wanders in partnership with Lladró is announcing the launch of a collection of porcelain lamps that will shine wherever it is placed in a room. Nightbloom is a collection inspired by the way the petals of a flower dance lightly in the breeze.
Installation and assembly:	Follow instructions of the installation guide
Care:	The luminaires require only a light dusting with a soft or microfiber cloth. Dust and polish the bulbs with that soft cloth before dusting the luminaire itself. Clean the porcelain parts in warm, soapy water. For non-porcelain components use only dry soft cloth. Do not use chemicals.



### ELECTRICAL CHARACTERISTICS



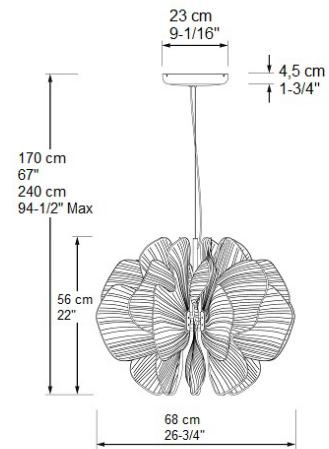
Max. Power:	40 W
Certifications and Marks:	CE (Yes), UKCA (Yes), UL (Yes), NOM (Yes), PSE (No), CCC (Yes)
Lampholder/LED:	LED - Integrated Led
<b>CE:</b>	40 W integrated LED 220 - 240 V 50/60 Hz
<b>UK:</b>	40 W integrated LED 220 - 240 V 50/60 Hz
<b>US:</b>	40 W integrated LED 100 - 125 V 50/60 Hz
<b>JP:</b>	40 W integrated LED 100 - 125 V 50/60 Hz
<b>CCC:</b>	40 W integrated LED 220 - 240 V 50/60 Hz
Bulb Limitations:	-
Class:	I
Regulation mode:	Dimmable LED (CE-UK-US)
Regulation included:	Dimmer included (No JP)
USB Charge:	No
LED characteristics (LED only):	2700K - 105 lm/W
Energy efficiency (LED only):	E
Risk group (LED only):	GR1
Others:	-

<b>CE:</b> (Europe) 220-240V - 50/60Hz	SKU: <b>01023983</b>	EAN: 737859239830
<b>UK:</b> (United Kingdom) 220-240V - 50/60Hz	SKU: <b>01023983</b>	EAN: 737859239830
<b>US:</b> (United States and Canada) 110-120V - 50/60Hz	SKU: <b>01023984</b>	EAN: 737859239847
<b>JP:</b> (Japan) 110-120V - 50/60Hz	SKU:	EAN:
<b>CCC:</b> (China) 220-240V - 50/60Hz	SKU: <b>01024246</b>	EAN: 737859242465
Product name:	<b>Nightbloom hang.lamp 60cm (white)</b>	



### PHYSICAL CHARACTERISTICS

General measures (cm):	56 x 68 x 68 cm (Height x Length x Width)
General measures (inch):	22 x 26 3/4 x 26 3/4" (Height x Length x Width)
Max. Height:	270 cm - 106 1/4"
Min. Height:	65 cm - 25 1/2"
Standard Height:	170 cm - 67"
Cable / Chain Length:	270 cm - 106 1/4"
Color cable:	Clear (CE), Clear (UK), Clear (US), Clear (JP), Clear (CCC)
Net weight:	21,80 kg - 48,07 lb
Materials:	Porcelain, aluminum
Support method:	Canopy
Support measures:	Ø23 x 4,5 cm - Ø9 x 1 3/4"
Support material:	Aluminum
Support color:	Aluminum
Accessory type:	-
Accessory measures:	-
Accessory material:	-
Accessory color:	-



### PACKAGING CHARACTERISTICS

Quantity boxes:	1
Measure box:	(1) 0,85 x 0,8 x 0,8 m - 33 1/2 x 31 1/2 x 31 1/2" (2) -
Volume box:	(1) 0,54 m³ - 19,21 ft³ (2) -
Weight box:	(1) 43,00 kg - 94,80 lb (2) -
Total Weight:	43,00 kg - 94,80 lb

<b>CE:</b> (Europe) 220-240V - 50/60Hz	SKU: <b>01024038</b>	EAN: 737859240386
<b>UK:</b> (United Kingdom) 220-240V - 50/60Hz	SKU: <b>01024038</b>	EAN: 737859240386
<b>US:</b> (United States and Canada) 110-120V - 50/60Hz	SKU: <b>01024039</b>	EAN: 737859240393
<b>JP:</b> (Japan) 110-120V - 50/60Hz	SKU:	EAN:
<b>CCC:</b> (China) 220-240V - 50/60Hz	SKU: <b>01024245</b>	EAN: 737859242458



### GENERAL



LED



IP20

Product name:	<b>Nightbloom hanging lamp 60cm (white-gold)</b>
Collection:	Nightbloom
Mounting:	Hanging lamp
Finish:	White - Gold
IP:	20
Use:	Indoor
Environment:	Marcel Wanders in partnership with Lladró is announcing the launch of a collection of porcelain lamps that will shine wherever it is placed in a room. Nightbloom is a collection inspired by the way the petals of a flower dance lightly in the breeze.
Installation and assembly:	Follow instructions of the installation guide
Care:	The luminaires require only a light dusting with a soft or microfiber cloth. Dust and polish the bulbs with that soft cloth before dusting the luminaire itself. Clean the porcelain parts in warm, soapy water. For non-porcelain components use only dry soft cloth. Do not use chemicals.



### ELECTRICAL CHARACTERISTICS



Max. Power:	40 W
Certifications and Marks:	CE (Yes), UKCA (Yes), UL (Yes), NOM (Yes), PSE (No), CCC (Yes)
Lampholder/LED:	LED - Integrated Led
<b>CE:</b>	40 W integrated LED 220 - 240 V 50/60 Hz
<b>UK:</b>	40 W integrated LED 220 - 240 V 50/60 Hz
<b>US:</b>	40 W integrated LED 100 - 125 V 50/60 Hz
<b>JP:</b>	40 W integrated LED 100 - 125 V 50/60 Hz
<b>CCC:</b>	40 W integrated LED 220 - 240 V 50/60 Hz
Bulb Limitations:	-
Class:	I
Regulation mode:	Dimmable LED (CE-UK-US)
Regulation included:	Dimmer included (No JP)
USB Charge:	No
LED characteristics (LED only):	2700K - 105 lm/W
Energy efficiency (LED only):	E
Risk group (LED only):	GR1
Others:	-

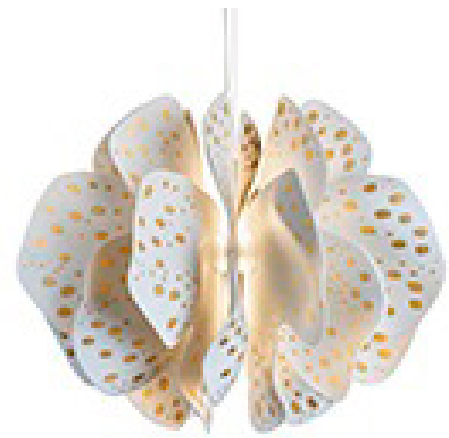
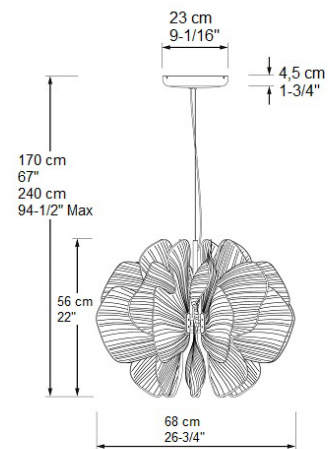
<b>CE:</b> (Europe) 220-240V - 50/60Hz	SKU: <b>01024038</b>	EAN: 737859240386
<b>UK:</b> (United Kingdom) 220-240V - 50/60Hz	SKU: <b>01024038</b>	EAN: 737859240386
<b>US:</b> (United States and Canada) 110-120V - 50/60Hz	SKU: <b>01024039</b>	EAN: 737859240393
<b>JP:</b> (Japan) 110-120V - 50/60Hz	SKU: <b>0</b>	EAN:
<b>CCC:</b> (China) 220-240V - 50/60Hz	SKU: <b>01024245</b>	EAN: 737859242458

Product name:	<b>Nightbloom hanging lamp 60cm (white-gold)</b>
---------------	--



### PHYSICAL CHARACTERISTICS

General measures (cm):	56 x 68 x 68 cm (Height x Length x Width)
General measures (inch):	22 x 26 3/4 x 26 3/4" (Height x Length x Width)
Max. Height:	270 cm - 106 1/4"
Min. Height:	65 cm - 25 1/2"
Standard Height:	170 cm - 67"
Cable / Chain Length:	270 cm - 106 1/4"
Color cable:	Clear (CE), Clear (UK), Clear (US), Clear (JP), Clear (CCC)
Net weight:	21,80 kg - 48,07 lb
Materials:	Porcelain, aluminum
Support method:	Canopy
Support measures:	Ø23 x 4,5 cm - Ø9 x 1 3/4"
Support material:	Aluminum
Support color:	Aluminum
Accessory type:	-
Accessory measures:	-
Accessory material:	-
Accessory color:	-



### PACKAGING CHARACTERISTICS

Quantity boxes:	1
Measure box:	(1) 0,85 x 0,8 x 0,8 m - 33 1/2 x 31 1/2 x 31 1/2" (2) -
Volume box:	(1) 0,54 m³ - 19,21 ft³ (2) -
Weight box:	(1) 43,00 kg - 94,80 lb (2) -
Total Weight:	43,00 kg - 94,80 lb